



Public Affairs Research Council of Alabama®

Most Alabama Cities Grow; Losses Moderate

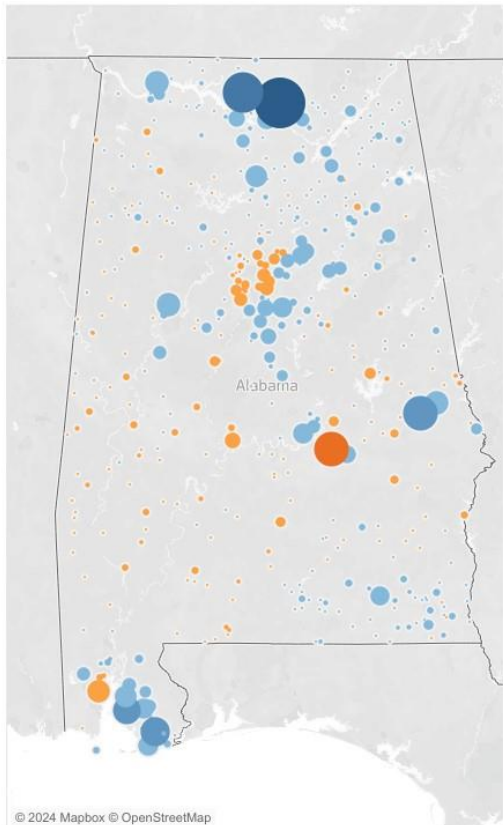
By Thomas Spencer, May 21, 2024

After being hit hard with declines during the Covid-19 pandemic, Birmingham and Mobile saw an ebb in population declines, while Huntsville and cities in Baldwin County, along with Auburn-Opelika and Tuscaloosa, continued to grow at a rapid pace. The U.S. Census Bureau estimates released this month point to widespread growth in cities in the northern tier of the state, and in the Wiregrass.

Population Change in Incorporated Places 2023

Population Rank and Change, cities over 2022-2023	% Change	Alabama Numeric Change Explorer	Cummulative Population Change Since 2010	Alabama's Big Four	Cities over 20,000
---	----------	---------------------------------	--	--------------------	--------------------

Population and Change in Incorporated Places, 2022-2023



2023 Population and Rank in Alabama

City Name	Pop. 2023	2023 Change	Pop. Rank
Huntsville	225,564	3,534	1
Athens	30,904	2,262	19
Auburn	82,025	1,648	7
Foley	24,873	1,180	27
Fairhope	24,974	1,108	26
Madison	60,854	1,063	9
Opelika	33,572	801	16
Tuscaloosa	111,338	763	5
Florence	42,437	750	11
Daphne	30,321	654	20
Cullman	19,913	648	33
Gulf Shores	16,850	569	39
Prattville	39,318	564	12
Silverhill	1,923	558	194
Chelsea	16,771	556	40
Triana	4,456	505	118
Enterprise	30,271	487	21
Pike Road	11,117	430	60
Margaret	6,236	424	94
Decatur	58,321	392	10
Odenville	5,352	380	103
Pelham	25,121	375	24
Calera	18,189	336	35
Albertville	23,031	305	28
Pell City	13,924	296	54
Trussville	26,770	271	23
Spanish Fort	10,923	268	61
Owens Cross Ro..	2,917	265	144
Millbrook	17,367	263	37
Lincoln	7,514	254	83
Jacksonville	14,682	251	50
Moundville	3,516	245	131
Semmes	5,846	243	95

Populations in smaller towns of the Alabama Black Belt, and west and central Alabama continue to decline modestly, according to the estimates. The population also dropped in Montgomery. The capital city didn't lose as many people as Birmingham in the first year of the pandemic but has seen steady losses over the past three years.

Population Change in Incorporated Places 2023

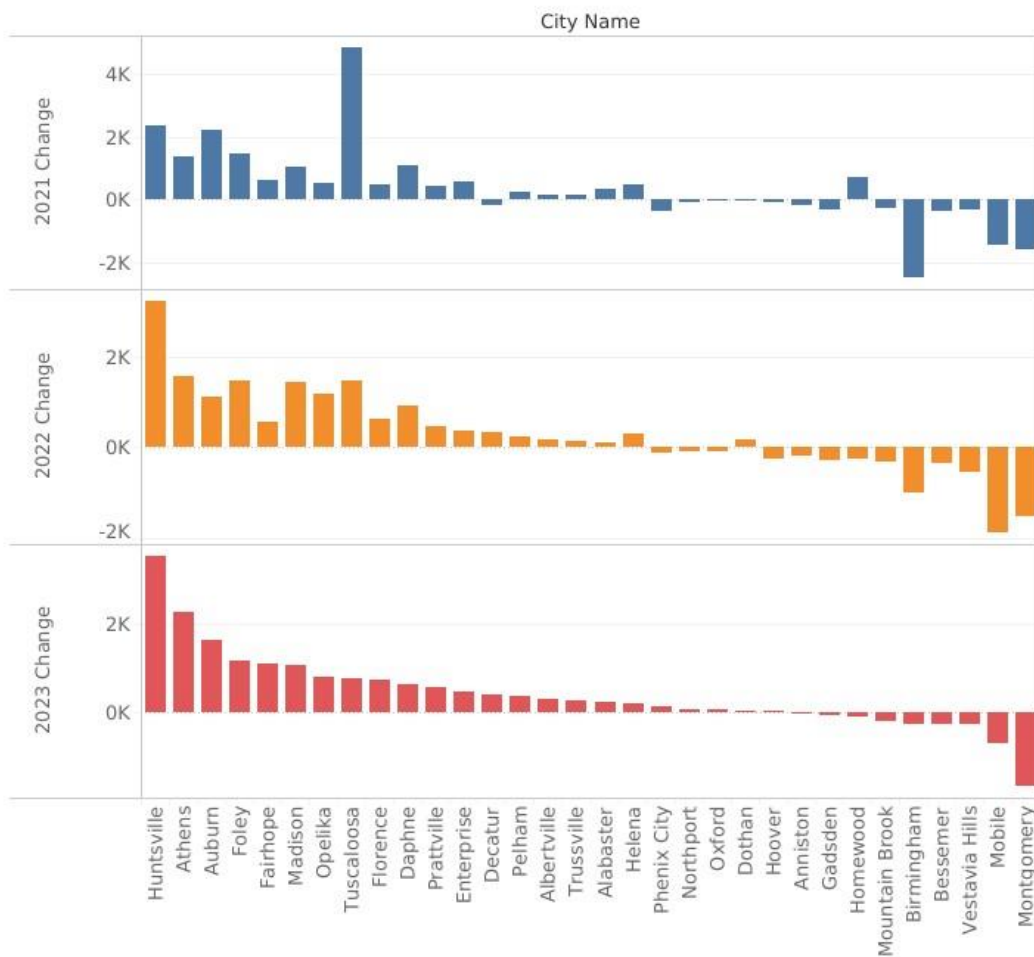
Alabama Numeric Change Explorer	Cummulative Population Change Since 2010	Alabama's Big Four	Cities over 20,000	USA MAP	USA Change
---------------------------------	--	--------------------	--------------------	---------	------------

Use the menu to compare other Alabama Cities over 20,000 in population

City Name
All

Alabama Large City Population Change Comparison Tool

Measure Names
■ 2021 Change
■ 2022 Change
■ 2023 Change



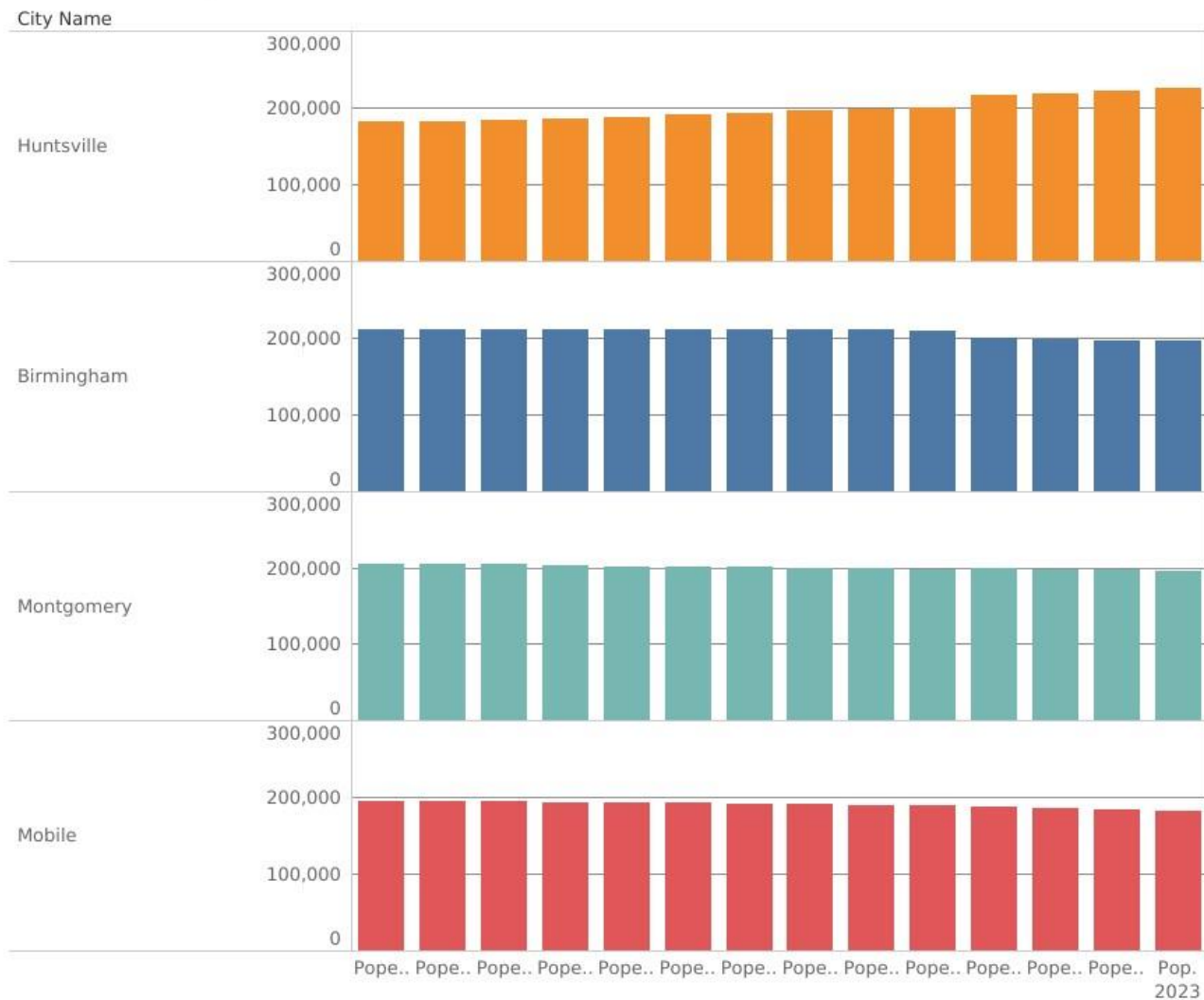
Montgomery’s estimated population decline of 1,657 was the largest drop among Alabama cities and compares to a decline of 695 in Mobile and 243 in Birmingham.

That allowed Birmingham to return to No. 2 in population among Alabama cities. Huntsville continues to move farther into the lead, with a population now topping 225,000.

Population Change in Incorporated Places 2023

% Change	Alabama Numeric Change Explorer	Cummulative Population Change Since 2010	Alabama's Big Four	Cities over 20,000	USA MAP	USA Change
----------	---------------------------------	--	--------------------	--------------------	---------	------------

Alabama's Big Four Cities



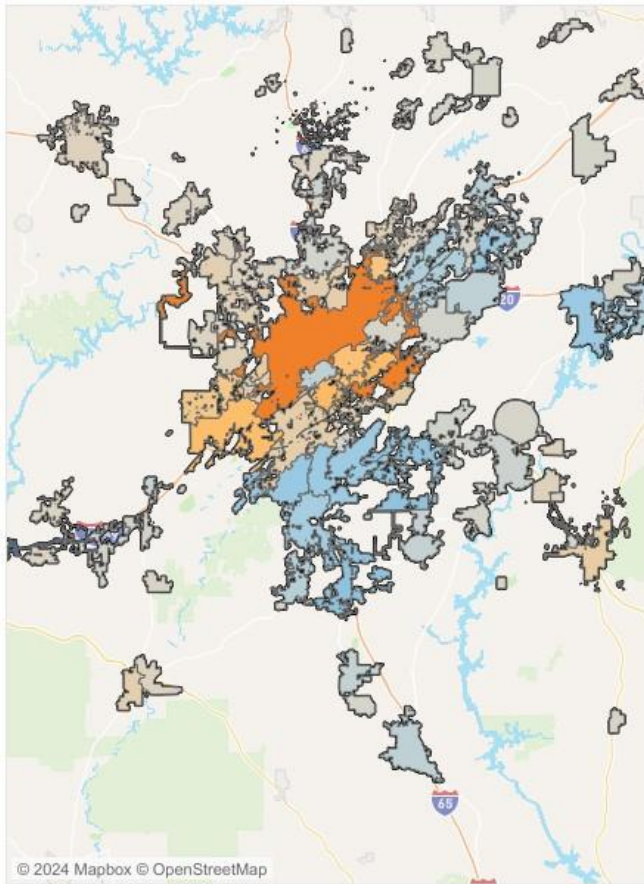
In terms of metro area population, Birmingham is still more than twice as large, but growth there is occurring away from the central city.

Close-in suburbs Vestavia, Mountain Brook, and Homewood saw population declines, but farther from the city center, Shelby County cities like Chelsea, Pelham, and Calera saw growth.

Population Change in Incorporated Places 2023

Population Rank and Change, cities over 2022-2023	% Change	Alabama Numeric Change Explorer	Cummulative Population Change Since 2010	Alabama's Big Four	Cities over 20,000
---	----------	---------------------------------	--	--------------------	--------------------

Numeric Population Change in Incorporated Places, Shaded by 2020-2023



Numeric Change

City Name	Pop. 2023	2023 Change	Change 2020 to 2023
Tuscaloosa	111,338	763	7,121
Chelsea	16,771	556	1,548
Margaret	6,236	424	1,071
Odenville	5,352	380	399
Pelham	25,121	375	874
Calera	18,189	336	1,574
Pell City	13,924	296	933
Trussville	26,770	271	574
Lincoln	7,514	254	600
Alabaster	34,107	238	715
Helena	22,117	221	1,026
Springville	5,233	191	419
Clanton	9,123	172	370
Irondale	13,526	170	35
Jemison	2,941	164	306
Vance	2,263	124	132
Columbia..	4,812	86	289
Jasper	14,448	81	-92
Leeds	12,416	77	86
Montevallo	7,708	76	484
Westover	1,911	74	119
Lake View	3,794	72	221
Harpersvil..	1,817	66	192
Kimberly	4,463	55	192
Hoover	92,448	42	-290
Oak Grove	592	40	34
Wilsonville	1,926	31	66
Riverside	2,266	29	39

Change 2020 to 2023
-4,754

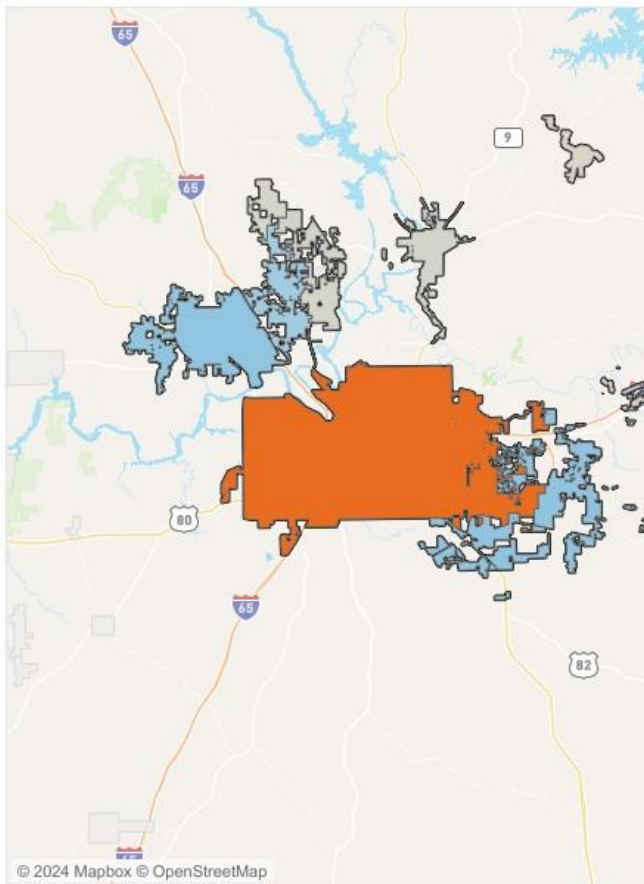


Despite declines in Montgomery, Pike Road, Prattville, and Millbrook saw increases.

Population Change in Incorporated Places 2023

Population Rank and Change, cities over 2022-2023	% Change	Alabama Numeric Change Explorer	Cummulative Population Change Since 2010	Alabama's Big Four	Cities over 20,000
---	----------	---------------------------------	--	--------------------	--------------------

Numeric Population Change in Incorporated Places, Shaded by 2020-2023



Change 2020 to 2023
-4,754



Numeric Change

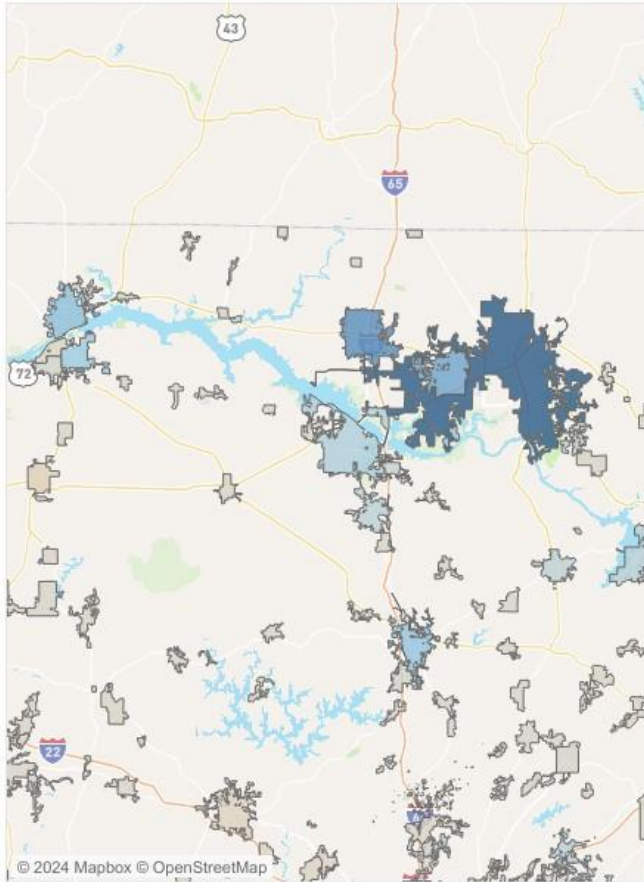
City Name	Pop. 2023	2023 Change	Change 2020 to 2023
Coosada	1,265	18	49
Deatsville	1,723	18	45
Eclectic	1,209	11	15
Elmore	1,394	30	116
Millbrook	17,367	263	775
Montgom..	195,287	-1,657	-4,754
Pike Road	11,117	430	1,535
Prattville	39,318	564	1,462
Shorter	371	-5	-22
Wetumpka	7,218	-141	86

While Huntsville added the most people, adjacent Athens and not-too-distant Decatur and Florence are continuing to see population growth.

Population Change in Incorporated Places 2023

Population Rank and Change, cities over 2022-2023	% Change	Alabama Numeric Change Explorer	Cummulative Population Change Since 2010	Alabama's Big Four	Cities over 20,000
---	----------	---------------------------------	--	--------------------	--------------------

Numeric Population Change in Incorporated Places, Shaded by 2020-2023



Numeric Change

City Name	Pop. 2023	2023 Change	Change 2020 to 2023
Huntsville	225,564	3,534	9,157
Athens	30,904	2,262	5,197
Auburn	82,025	1,648	4,978
Foley	24,873	1,180	4,125
Fairhope	24,974	1,108	2,272
Madison	60,854	1,063	3,554
Opelika	33,572	801	2,493
Tuscaloosa	111,338	763	7,121
Florence	42,437	750	1,860
Daphne	30,321	654	2,639
Cullman	19,913	648	1,482
Gulf Shor..	16,850	569	1,582
Prattville	39,318	564	1,462
Silverhill	1,923	558	1,128
Chelsea	16,771	556	1,548
Triana	4,456	505	1,457
Enterprise	30,271	487	1,437
Pike Road	11,117	430	1,535
Margaret	6,236	424	1,071
Decatur	58,321	392	573
Odenville	5,352	380	399
Pelham	25,121	375	874
Calera	18,189	336	1,574
Albertville	23,031	305	622
Pell City	13,924	296	933
Trussville	26,770	271	574
Spanish F..	10,923	268	787
Owens Cr..	2,917	265	286

Change 2020 to 2023

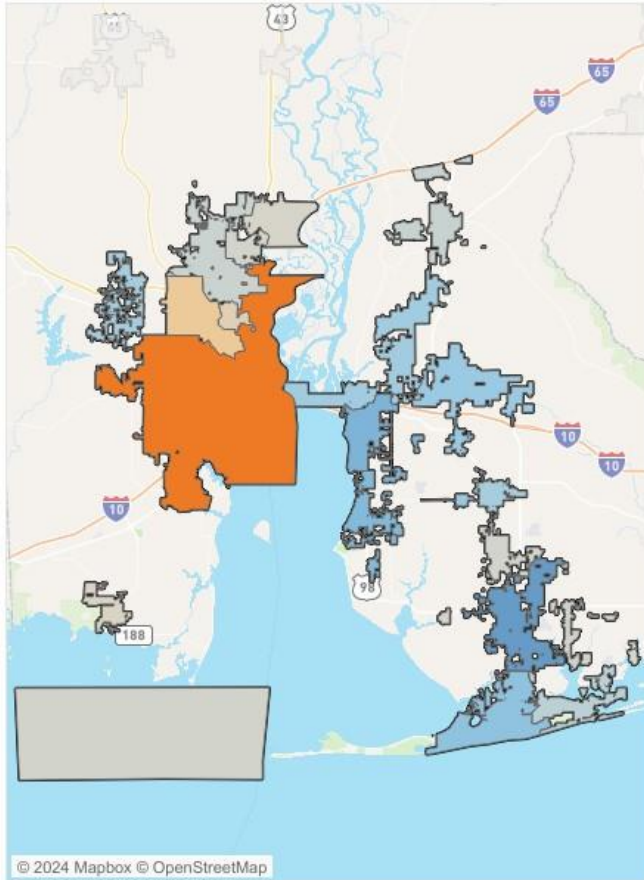


Though Mobile County cities are experiencing some population declines, it is clear that the growth in nearby Baldwin County is coming from domestic in-migration. Far more people are arriving in cities like Fairhope, Foley, Daphne, and Gulf Shores than the population declines in Mobile County would produce.

Population Change in Incorporated Places 2023

Population Rank and Change, cities over 2022-2023	% Change	Alabama Numeric Change Explorer	Cummulative Population Change Since 2010	Alabama's Big Four	Cities over 20,000
---	----------	---------------------------------	--	--------------------	--------------------

Numeric Population Change in Incorporated Places, Shaded by 2020-2023



Numeric Change

City Name	Pop. 2023	2023 Change	Change 2020 to 2023
Bay Minet..	8,371	92	249
Bayou La ..	2,155	-6	-39
Chickasaw	6,283	-32	-173
Creola	1,967	22	30
Daphne	30,321	654	2,639
Dauphin I..	1,895	53	108
Elberta	2,109	36	103
Fairhope	24,974	1,108	2,272
Foley	24,873	1,180	4,125
Gulf Shor..	16,850	569	1,582
Loxley	4,623	218	982
Magnolia ..	844	12	34
Mobile	182,595	-695	-4,026
Orange B..	8,534	84	403
Perdido B..	578	10	25
Prichard	18,816	-53	-438
Robertsd..	7,421	227	669
Saraland	16,435	25	209
Satsuma	6,849	47	92
Semmes	5,846	243	714
Silverhill	1,923	558	1,128
Spanish F..	10,923	268	787
Summerd..	1,576	30	91

Change 2020 to 2023

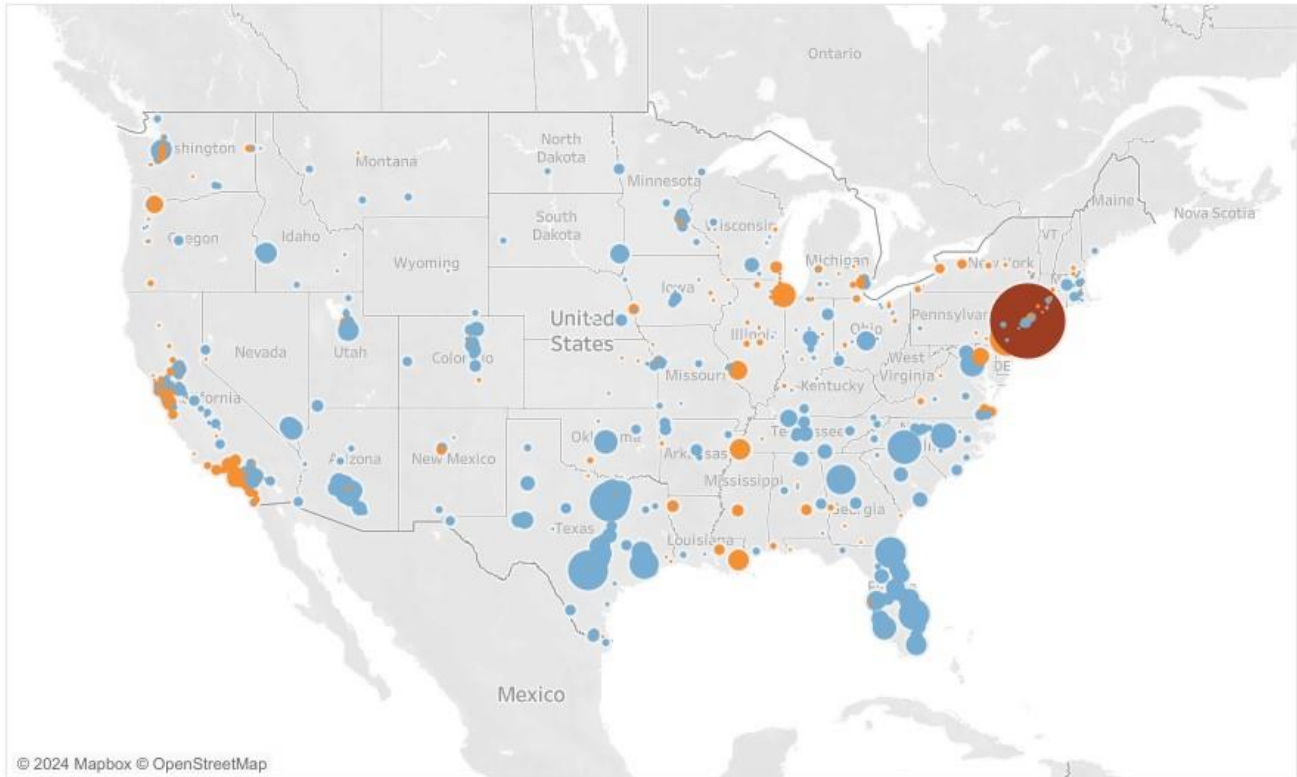


When looking at the entire country, it is plain to see that whatever population change is going on in Alabama pales in comparison to the movement in other parts of the country. New York City's population declined by over 77,000 in 2023 according to the estimates. Meanwhile, Texas cities like Fort Worth and San Antonio passed more than 20,000 new residents apiece. Closer to home, Atlanta added over 12,000, Charlotte over 15,000, and Jacksonville, Fla, over 14,000.

Population Change in Incorporated Places 2023

Alabama Numeric Change Explorer	Cummulative Population Change Since 2010	Alabama's Big Four	Cities over 20,000	USA MAP	USA Change
---------------------------------	--	--------------------	--------------------	----------------	------------

USA Map



City Populations

City and State	Most Recent Year Change	Pop. 2023
San Antonio city, Texas	21,970	1,495,295
Fort Worth city, Texas	21,365	978,468
Charlotte city, North C..	15,607	911,311
Jacksonville city, Florida	14,066	985,843
Port St. Lucie city, Flori	13,169	245,021

For more information about this and other PARCA research, visit parcalabama.org.