

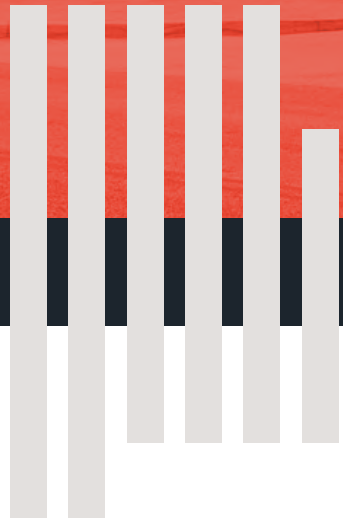
ANNUAL REPORT

2021

PARCALABAMA.ORG



**Public Affairs
Research Council
of Alabama**



PARCA IS

Alabama's first and only

nonpartisan,

data-driven

research center.

**Find out how
PARCA can help you:**

✉ info@parcalabama.org

f [@PARCA.AL](https://www.facebook.com/PARCA.AL)

in [@parcalabama](https://www.linkedin.com/company/parcalabama)

🐦 [@parcalabama](https://twitter.com/parcalabama)

On the cover: Downtown Gadsden, Alabama

LETTER FROM THE PARCA PRESIDENT

Dear Friends,

The Public Affairs Research Council of Alabama (PARCA) is widely recognized as the preeminent nonpartisan information resource for Alabama's leaders and policy makers. Founded in 1988 by Governor Albert Brewer, from its beginnings PARCA has fulfilled its mission with the same integrity, vision, and high performance standards that characterized its founder. As a result, Alabama leaders have been able to rely upon sound, data-driven research promoting informed decision-making, to the continuing benefit of the State of Alabama and its citizens.

PARCA's research informs major policy debates and is relied upon by policy makers and organizations across the spectrum. Examples of recent research include projects examining school funding and academic performance, Alabama's top-rated Pre-K initiative, the Education Trust Fund's Rolling Reserve Act, regional collaboration initiatives and opportunities, state tax comparisons, and an objective, data-driven analysis of potential Medicaid expansion.

The following pages highlight the accomplishments of PARCA in 2021. Throughout 2021, we completed 35 research projects, hosted six events, gave 20 presentations, and were cited in 52 independent news media stories.

In the spring of 2021 during the pandemic, we held our first virtual annual forum focusing on the impact and challenges throughout the state caused by Alabama's current broadband network. The free five-day event was joined by more than 400 registered participants benefiting from the insights and ideas of some of the most prominent voices in the field. In September 2021, we welcomed

the political columnist and historian George Will to our Speaker Series. This followed our inaugural Speakers Series event, pre-pandemic, featuring historian and political commentator Jon Meacham. We expect our 2022 Speaker Series event in September to be a lively and fun evening as we host political consultant, commentator and raconteur James Carville.

Having served on PARCA's board of directors for a number of years, I'm honored to serve as president and board chair this year. I'm proud of the work that this organization consistently does to help Alabama's leaders make better-informed decisions. PARCA keeps the good work coming thanks to the talents and hard work of its dedicated staff and through the ongoing commitment and financial support of our board, business leaders, and many community partners. We are most grateful for the trust placed in PARCA, the value given to our work, and the investments that are made to allow that work to continue.

We ask that you please consider how you or your organization can support PARCA and its mission this year and as we move forward. It is through such support that PARCA will continue making its unique and important contribution to the State of Alabama and its people.

Sincerely,



David Donaldson

President, PARCA Board of Directors

OUR PEOPLE

Meet our experienced team.



RYAN HANKINS
Executive Director



MARCI SMITH, MPA, PMP
Director of Operations



JOE ADAMS, PH.D.
Research Coordinator



RACHEL COCHRAN, PH.D.
Senior Research Associate



TOM SPENCER
Senior Research Associate



CANDICE STONE
Executive Assistant

AFFILIATED RESEARCHERS

RANDOLPH C. HORN, PH.D.
*Professor of Political Science
and Director of Strategic and
Applied Analysis
Samford University*

PETER JONES, PH.D.
*Assistant Professor
Department of Government
University of Alabama
Birmingham*

BRIDGET KING, PH.D.
*M.P.A. Director and
Assistant Professor
Department of Political Science
Auburn University*

**KENESHA REYNOLDS-ALLIE,
PH.D.**
*Technical Assistance
Specialist in Risk Management,
Rural Coalition
University of New Hampshire*

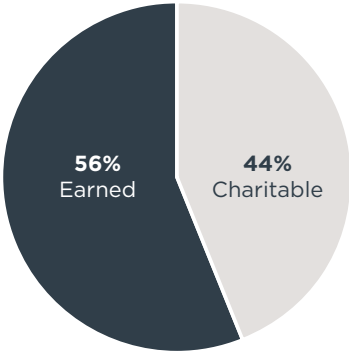
OUR PARTNERS

Cities, counties, departments, boards, commissions, and institutions of higher education perform critical functions in the design and delivery of public services. PARCA is a proud partner with public agencies to formulate research questions, identify policy innovations, and access and interpret crucial data.

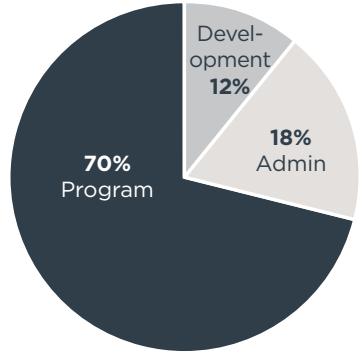
Our Public Agency Members include:

- Alabama Department of Archives and History
- Alabama Department of Economic and Community Affairs
- Alabama State Department of Education
- Athens State University
- Auburn University
- Calhoun Community College
- City of Alabaster
- City of Auburn
- City of Elba
- City of Fairhope
- City of Guntersville
- City of Hoover
- City of Montgomery
- City of Mountain Brook
- City of Opelika, Department of Economic Development
- Dothan City Schools
- George C. Wallace Community College - Dothan
- Lawson State Community College
- Monroeville/Monroe County Economic Development Authority
- Montgomery Public Schools
- Morgan County Economic Development Association
- Northwest-Shoals Community College
- Retirement Systems of Alabama
- Talladega County Economic Development Authority
- Troy University
- University of Alabama System
- University of North Alabama
- University of West Alabama
- Wallace State Community College - Hanceville

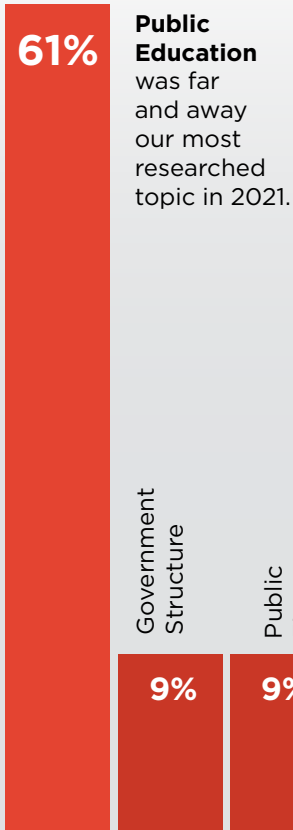
WHERE OUR FUNDING CAME FROM...



...AND HOW IT WAS USED



RESEARCH BY SUBJECT



DELIVERABLES

- | | |
|---|------------------------------------|
| 18
Policy and Research Briefs | 4
Major Research Reports |
| 5
Data Analysis Projects | 7
Program Evaluations |

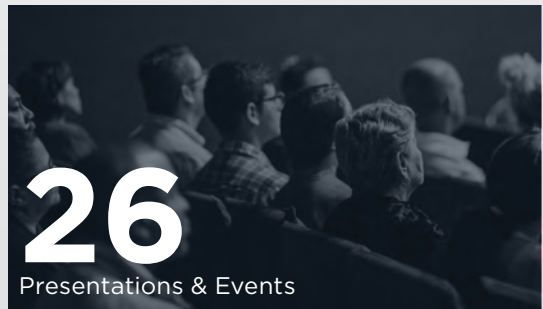
OUTREACH INCLUDING EVENTS & MEDIA



**2021
Annual
Forum**
March 1-5



**2021
Speaker
Series**
September 23



Board of Directors

* Executive Committee

† Ex Officio

‡ Leave of Absence

DAVID DONALDSON*
PRESIDENT

*Senior Advisor to the
Chairman & CEO, Retired
Vulcan Materials Company
BIRMINGHAM*

MACKE MAULDIN*
VICE PRESIDENT

*President
Bank Independent
FLORENCE*

**TYRONE
FENDERSON, JR.***
TREASURER

*Mobile-Baldwin County
Market President
Synovus Bank
MOBILE*

J.T. PRICE*
SECRETARY
CEO

*LandscapeWorkshop
BIRMINGHAM*

**BETSY
HOLLOWAY, Ph.D.***
**IMMEDIATE PAST
PRESIDENT**

*Vice President for
Advancement and
Marketing
Samford University
BIRMINGHAM*

Rose Allen

*Executive Director,
Huntsville Operations
Special Aerospace Services
HUNTSVILLE*

Fred Blackwell

*President
Fred Blackwell Roofing
SMITH'S STATION*

Stan Blanton

*Managing Partner
Balch & Bingham
BIRMINGHAM*

Preston Bolt

*Member
Hand Arendall Harrison Sale
MOBILE*

Tom Brinkley

*Shareholder
Maynard Cooper Gale
BIRMINGHAM*

J.W. Carpenter

*President
Prosper
BIRMINGHAM*

Daniel Coleman

*President
Birmingham-
Southern College
BIRMINGHAM*

Kate Cotton*

*Executive Director
Leadership Alabama
BIRMINGHAM*

Leigh Davis

*Vice-President, Economic and
Community Development
Alabama Power
BIRMINGHAM*

John Driscoll

*CEO
Alabama State
Port Authority
MOBILE*

Brian Hamilton

*CEO
Trillion Communications
BIRMINGHAM*

Joe Hampton

*President
Spire Energy
BIRMINGHAM*

Abe Harper

*President
Harper Technologies
MOBILE*

Judd Harwood

*Partner
Bradley Arant
Boult & Cummings
BIRMINGHAM*

Horace Horn

*Vice President of
External Affairs
PowerSouth
Energy Cooperative
MONTGOMERY*

2022

Ted Hosp

*Vice President,
Governmental
Affairs Blue Cross and
Blue Shield of Alabama*
MONTGOMERY

C. Wayne Hutchens

President
AT&T Alabama
BIRMINGHAM

Donny Jones

Chief Operating Officer
Chamber of Commerce
of West Alabama
TUSCALOOSA

Cathy Sloss Jones

President and CEO
Sloss Real Estate
BIRMINGHAM

Kim Lewis†

CEO
PROJECTXYZ
HUNTSVILLE

Deborah J. Long*

*Executive Vice President,
Chief Legal Officer and
Secretary, Retired*
Protective Life Corporation
BIRMINGHAM

Larkin Martin

Agent
Martin Farm
COURTLAND

Scott McLain*

*Principal and
Managing Broker*
Coldwell Banker
Commercial
McLain Real Estate
HUNTSVILLE

David Muhlendorf

President & CEO, Retired
LDM Company
FLORENCE

Charles Nailen

Owner
BBG Specialty Foods
DOTHAN

Steven Nichols

General Counsel
Mercedes-Benz USA
TUSCALOOSA

Stratton Orr

CEO
Sexton, Inc.
DECATUR

Alan Register

*Birmingham
Market President*
Regions
Financial Corporation
BIRMINGHAM

Dudley Reynolds

CEO, Retired
Alagasco
BIRMINGHAM

Lindsay Sinor*

President
Vulcan Lands, Inc.
BIRMINGHAM

Bryson Stephens

Chairman
EBSCO
BIRMINGHAM

George Talbot

*Director of
Government Relations*
Volkert, Inc.
MOBILE

Beck Taylor, Ph.D.

President
Samford University
BIRMINGHAM

Jeff Traywick†

*Vice President,
Economic Development*
Birmingham
Business Alliance
BIRMINGHAM

Neal Wade

*Director Advanced
Economic Development
Leadership Program*
Oneonta

Roundtable

The PARCA Roundtable was established in January of 1998 to give young civic and business leaders the opportunity to study issues and government policy in Alabama in conjunction with the research conducted by the Public Affairs Research Council of Alabama.

* Executive Committee

Malcolm Albin

Merrill Lynch

Megan Bell

Shipt

Cliff Bell

CBRE Group

Brit Blalock

Innovation Depot

Trey Bolling

Sirote & Permutt

JaTaune Bosby

ACLU of Alabama

Rebecca Boykins*

Alabama Department of
Human Resources

Jackie Bretl

Montgomery Education
Foundation

Derek Conrad Brown*

Ken Chapman & Associates

Will Bryant

Quantalytix

Becky Carpenter

Corporate Realty

Josh Cirulnick

ConcreteSouth

Jennifer Commander

Vulcan Materials Company

Whitney Dachelet

Samford University

David Dada

University of Alabama at
Birmingham

Wendy Davis

Command Alkon

Elijah Davis

Urban Impact

Robert Dawson, Jr.

Sofos Harbert

Donya Deal

Vestavia Hills High School

Chinelo Dike-Minor

Samford University,
Cumberland School of Law

Alex Flachsbar

Opportunity Alabama

Drew Fravert

BlockFi

Katie Glenn

Southern Poverty
Law Center

Brandon Glover

Alabama Power Foundation

Blair Goodgame*

St. Clair County Economic
Development Council

Matt Hinshaw

Bradley Arant
Boult Cummings

Jessica Hopper

United Way of
Central Alabama

Ashley Jernigan

JDB Hospitality

Henry Joe

Clarity Global
Health Systems

Peter Jones

University of Alabama at
Birmingham

Haley Kendrick

Bronze Valley Accelerator

2022

Kendra Key

Hope Enterprise Corporation

Andrew Knowlton

Hand Arendall

Clay Loftin

Blue Cross Blue Shield of Alabama

Chris McCauley

UAB School of Arts and Sciences

T.C. McLemore

Red Mountain Park

Lydia Messina

Protective Life Corporation

Hudson Moore

Altec, Inc.

Brian Muenger

City of Pell City

Drew Nelson

Alabama Medicaid Office

Dillon Nettles

ACLU of Alabama

Taylor Nichols

Deputy Attorney General for the Alabama Office of Information Technology

Neal Owens

Urgent Care for Children

Joanne Patterson

United Way of Central Alabama

John Peinhardt

Directorpoint, LLC

Christian Pereyda

Maynard Cooper & Gale

Vince Perez

Alabama Department of Commerce

Chad Pilcher

Balch & Bingham

Mary Elizabeth Roberson

PERITUS Public Relations

Ryan Robichaux*

Bradley Arant Boulton Cummings

Christianna Rudder

Landscape Workshop

Zarinah Shahid

Alabama Power Company

Michael Stone

Porter, White & Company

Jonathon Studstill

Regions Bank

Jeff Thompson

Pell City CEPA

Jeff Traywick* (CHAIR)

Birmingham Business Alliance

Jarrett Tyus

Starnes Media

Ada Katherine van Wyhe

Alabama Department of Mental Health

Griffith Waller

City of Montgomery

Jack West

EnPower Solutions

Ashley Whatley

Leadership Alabama

Whitney Wright

Athena Collective

David Ytterberg

Berg Strategy

PARCA Contributors

\$1,000 And Above

\$75,000

Samford University*

\$20,000 AND OVER

Alabama Power Foundation
Charles and Estelle Campbell Foundation
Regions Financial Corporation
Vulcan Materials Company Foundation

\$10,000 TO \$19,999

AT&T Alabama
Bank Independent
Blue Cross Blue Shield of Alabama
Protective Life Corporation
Robert R. Meyer Foundation
Spire Energy
Susan Mott Webb Foundation
The Daniel Foundation of Alabama
Vulcan Materials Company

\$5,000 TO \$9,999

Altec/Styslinger Foundation
Arlington Trust Company
Brasfield & Gorrie, LLC
J.T. and Erin Price
Bryson Stephens
The Caring Foundation
Wells Fargo Foundation

\$1,000 TO \$4,999

Alabama Power Company
Alabama Rural Electric Association
Balch & Bingham
Birmingham Business Alliance
Fred Blackwell
Bradley Arant Boulton Cummings
Tom Brinkley
Burr & Forman
Business Council of Alabama

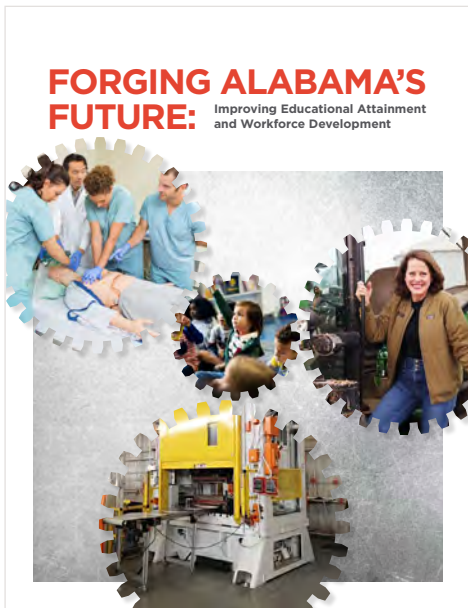
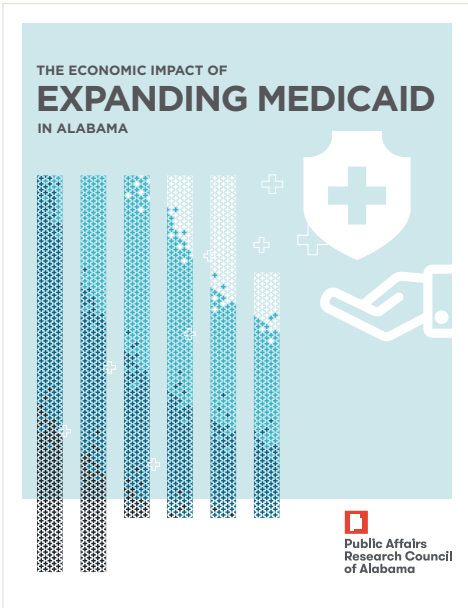
**Samford donates office space, IT, and business services.*

2021

Coca Cola Bottling Company United, Inc.
David Donaldson
Dunn Investment Company
EBSCO Industries, Inc.
Fine, Geddie & Associates
Great Southern Wood Preserving, Inc.
Hand Arendall Harrison Sale, LLC
Judd Harwood
Jimmie and Emil Hess Fund
Betsy Bugg Holloway
Ted Hosp
C. Wayne Hutchens
INTERFUZE Corporation
Carl E. Jones Jr.
Landscape Workshop LLC
Kim Lewis
Debbie Long and Bo Sockwell
Lyons Law Firm
Macke Mauldin
Maynard Cooper & Gale

D. Scott McLain
Drayton Nabers, Jr
Charles Nailen Jr.
Kate Nielsen
Mr. and Mrs. Jerry Powell
PowerSouth Energy Cooperative
Ram Tool Construction Supply Co.
Dudley Reynolds
Robins & Morton
Russell Lands, Inc.
School Superintendents of Alabama
The Albemarle Corporation
The Sexton Family Charitable Foundation
Vulcan Industrial Contractors Co., LLC
Walmart Foundation
William E. Smith Jr.
William T. Ratliff III

Every attempt is made to ensure the accuracy of this information. Please contact us if an error has been made.

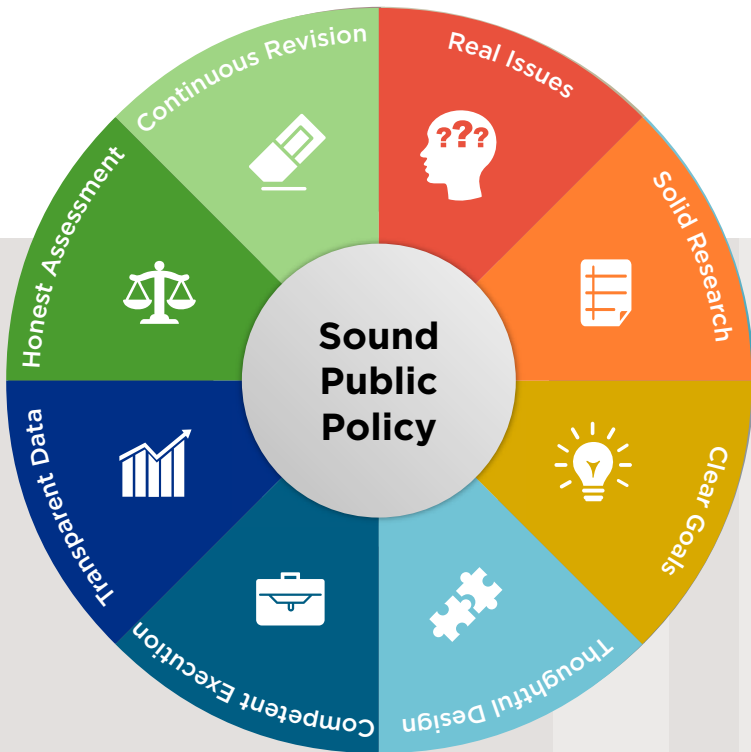


report conducted on behalf of
 Business Education Alliance of Alabama

Visit our website at parcalabama.org to view these reports and more.

What PARCA Believes

ALABAMA CAN DO BETTER through transparent governments making sound policy.



The Public Affairs Research Council of Alabama is a nonpartisan research organization focused on helping state and community leaders make better-informed public policy decisions.

How we do it:

Data Analysis

Policy Research

Program Evaluation

Technical Assistance



**Public Affairs
Research Council
of Alabama®**

P.O. Box 293931
219 Brooks Hall,
Samford University
Birmingham, AL 35229
205 726 2482

parcalabama.org